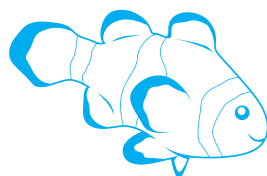


LITTLE  
FISHES  
- PRE -  
SCHOOL

[www.littlefishes.org.uk](http://www.littlefishes.org.uk)  
OFSTED No - EY270171



# CONTENTS

---

**A warm welcome to Little Fishes, we hope you find this information helpful if you have any questions please feel free to ask any member of staff.**

---

*Please read all the information available to all parents/carers, situated in the foyer.  
If you have any questions / problems please ask a member of staff.*

---

## **1 - About**

*About us  
Planning  
Contact Us*



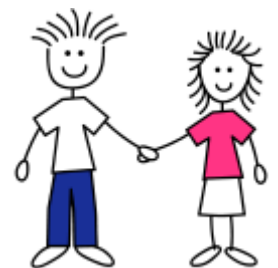
## **2 - Fee's**

*Costs  
Family Tax Credit*



## **3 - Parent's**

*Parents as Partners  
Books Borrow Scheme  
Helping  
Keyworker  
Snack Bar*



## **4 - Your Children**

*What to Wear  
Illness  
Teddy Bears  
Achievements*



# ABOUT



**Little Fishes pre-school began over 20 years ago and has grown and flourished ever since. We are open 5 morning sessions 9.15am-12.15pm, and 5 afternoon sessions 12:30 pm-3.30pm. We also have a lunch club. We have places for children to stay all day - 9.15 - 3.30 pm. We have 9 permanent staff and some relief staff.**

## Planning

When planning we choose different learning intentions (what we would like the children to learn) grouped under the different areas of learning, ensuring that all the six areas of learning are given equal emphasis and that all aspects of learning within the six areas are covered frequently. We observe the children continuously and our observations guide us in our planning for the following week's . This enables us to help each individual child to reach their full potential in all areas of their development and learning.

## Contact Us

T - 01604 495292 (term time 8.30am - 4pm)  
T - 01604 409387 (out of term emergencies)  
E - [barbara@littlefishes.org.uk](mailto:barbara@littlefishes.org.uk)

Lodge Farm Community Centre, Crestwood Road, Lings, Northampton

We plan a carefully structured curriculum that provides rich and stimulating experiences for all the children. (The term curriculum is used to describe everything children do, see, hear or feel in pre-school)

Our curriculum is organized into six areas of learning:

1. Personal, social and emotional development
2. Communication, language and literacy
3. Knowledge and understanding of the world
4. Problem solving, reasoning and numeracy.
5. Physical development
6. Creative development

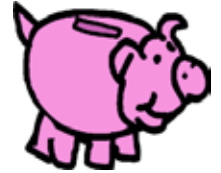
These six areas help us plan the activities, experiences, and provide a framework for the early year's curriculum.

For example, children building with blocks may cooperate in carrying the bigger blocks, negotiate the best place to put them, compare the weight of different blocks and act out imaginary scenes. Therefore, they may be developing language, problem solving and numeracy, personal and social skills through this one activity. We are observing the children all the time so we can support and extend their play, learning and development.

Pictures from last weeks learning can be seen on the photo-viewer in the entrance hall



# FEE'S



---

## Fee's

£8.50 - per session (9.15-12.15 or 12.30-15.30)

The cost for a child to come full time providing your child is receiving funding for 5 sessions per week is £45.50

Full Time, Monday - Friday 9.15am - 15.30pm

The cost for a full time place for a child not funded is £88 a week

Full Time, Monday - Friday 9.15am - 15.30pm

Lunch club fees are 60p per day for children attending all day and £1.20 for other children. *There are limited places at Lunch club please ask Barbara or Cheryl for details.*

Can all children staying for lunch club bring a packed lunch, with a healthy drink, and we do prefer no sweets or chocolate bars please.

---

## Family tax credit

If you are claiming working family tax credit, you might be entitled to claim childcare costs. It might be worth looking into if you want to find out more phone the Inland Revenue on 0845 609 5000. *Ask a member of staff if you require more information.*

---

Please can you make sure your child's sessions fee's are paid up to date.

Fee's are paid either weekly or in advance

Fee's have to be paid even when your child is absent

You can pay by direct debit in advance. Please ask about this

Unfortunately cheques can be accepted for payment

*If you have any problems please speak to Barbara*

---

## Important

Please ensure all information and contact numbers we have for you are kept up to date. You must let us know if contact numbers change. We need to be able to contact you in an emergency.



# PARENT'S



---

## Parents as partners

Parents are children's first and most enduring educators. When parents and staff work together the results have a positive impact on your child's development and learning. A successful partnership needs a two-way flow of information, knowledge and expertise. Staff will listen to parents, make sure you feel welcome, keep parents informed, talk about and record information about your child's progress and achievements.

We believe that continuity is important and can help your child's confidence, progress and development, so we would welcome you and your child to stay on at Little Fishes until they go to school.

Your child would be eligible for a funded place up to five sessions a week starting when they are three (depending on their date of birth and term dates), *please ask a member of staff if you need more information.*

---

## Helping

Feel like helping out? Maybe you could come in and wash up. We need someone every morning and afternoon. We also need people to help wash the paint pots up on Fridays, help with an activity, help with an activity, cooking, have a go at making the dough, washing the tea towels or collecting things we can use, or maybe you or someone you know works somewhere that can donate things like card, paint, glue, snacks. *If you are interested or have any other ideas then talk to a member of staff.*

---

## Snack Bar

We have a snack bar where the children can come and have a snack when they are ready between 10.30am - 11.30am; in the morning and between 14.00pm - 15.00pm in the afternoon. The snacks on offer each session are varied from a choice of something savoury, sweet, fruit or vegetable. The children also enjoy cooking different things and may have that at snack time. *If your child has any allergies/problems with food please let a member of staff know at once.*

---

## Book borrow scheme

We run a book borrow scheme where you and your child can choose a book together and take home for a few days, also you will get a book to write anything you need or want to tell us and we will write in it to let you know how your child is doing.

---

## Coffee Bar

The coffee bar next to the Community Centre is open in the morning 9.00-9.30 for drinks. A warm dry place to wait and chat before pre-school opens. The coffee bar is staffed by volunteers.

---

## Keyworker

We operate a key worker system, which means every child attending Little Fishes Pre-school is allocated a member of staff (key worker). The staff can then liaise with the parents, observe and record children's progress.

The fish board in the entrance hall will tell you who your child's key worker is.



# YOUR CHILDREN

---



## What To Wear

Please dress your child so they feel comfortable. We do provide aprons but children still might get messy.

Please provide a named bag with a change of clothes; you can also bring plimsolls for your child to change into especially in the winter if they are going to wear wellies

Please do not let your child bring jewellery, sweets or money into pre-school. Please leave a named coat in cold weather as as the children will play out in the play area.

**P.E** - We have P.E once a week alternating days, please can all children wear appropriate clothing, (plimsolls, tracksuit, t-shirt, jog pants etc). (P.E dates are available)

It is essential that all children's coats, sunhats and jumpers are named. All lunch boxes also need to be named clearly. Spoons for yogurts etc will be provided by pre-school.

---

## Illness and Medication

We cannot accept children into pre-school if they are suffering from any infectious diseases e.g. chickenpox, impetigo, scabies, conjunctivitis or a doubtful rash, sore throat, sickness and diarrhea.

If your child has sickness or diarrheas do not bring them back to pre-school for 48 hours. Staff can give asthma inhalers if parents fill in a medication form.

*Please let us know if your child is not coming to Pre-school due to illness, holidays and appointments etc. The telephone number for pre-school is 01604 495292 - please ring for advice.*

---

## Teddy Bears

We have a birthday bear that your child will be able to bring home on their birthday, and a holiday bear that will go on holiday with the children.

*Please read the bear leaflet.*

---

## Achievements

We give stickers out to the children from time to time. These will be given for a variety of reasons, helping, kindness, good work, an extra special achievement etc.

